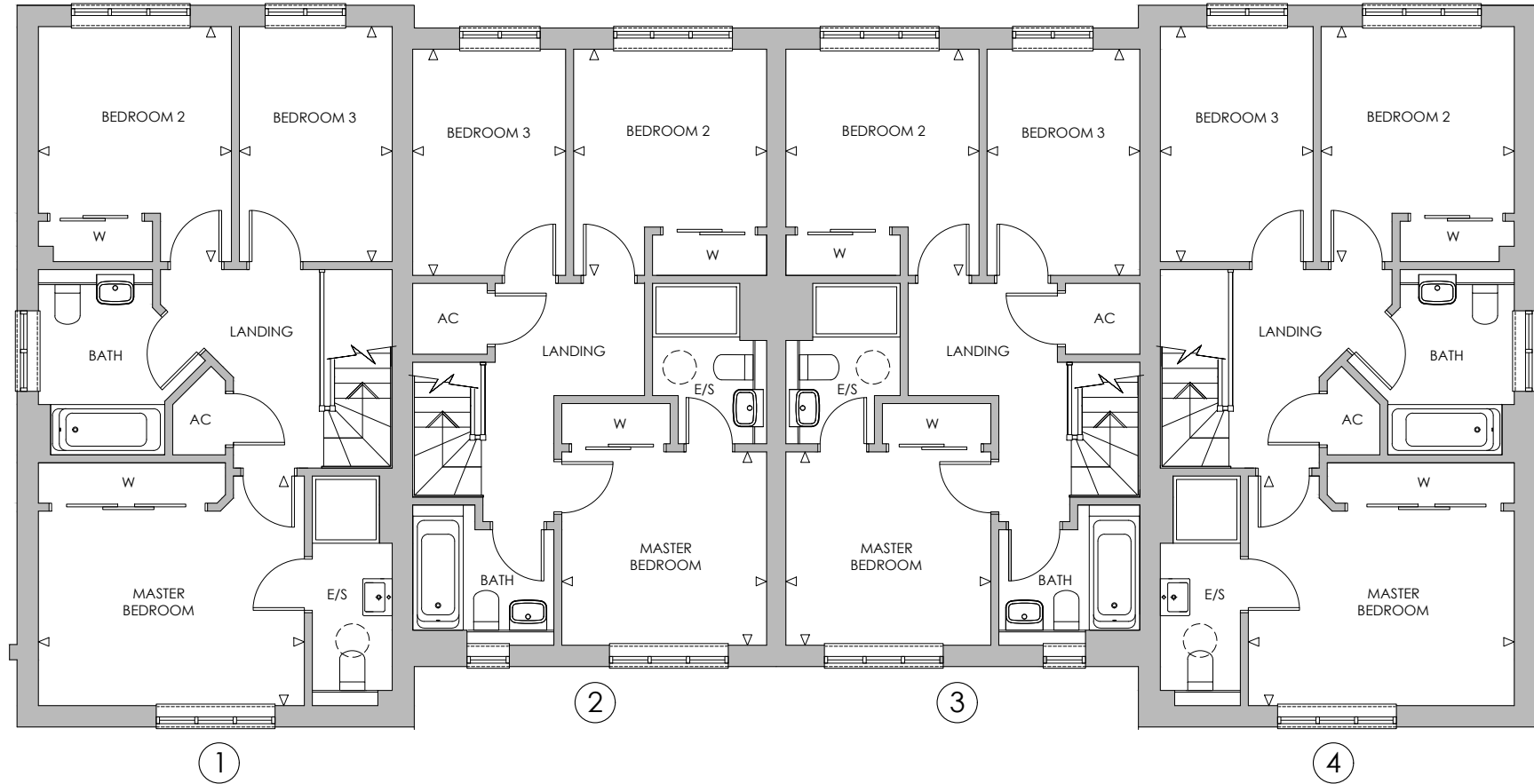


FIRST FLOOR PLAN - PLOTS 1-4



PLOTS 1 & 4

MASTER BEDROOM	3960mm x 3420mm (max)	13' x 11'3"
BEDROOM 2	2875mm x 3500mm (max)	9'5" x 11'6" (max)
BEDROOM 3	2275mm x 3500mm (max)	7'6" x 11'6" (max)

PLOTS 2 & 3

MASTER BEDROOM	3050mm x 2880mm	10' x 9'6"
BEDROOM 2	2875mm x 3370mm (max)	9'5" x 11'1" (max)
BEDROOM 3	2275mm x 3370mm (max)	7'6" x 11'1" (max)