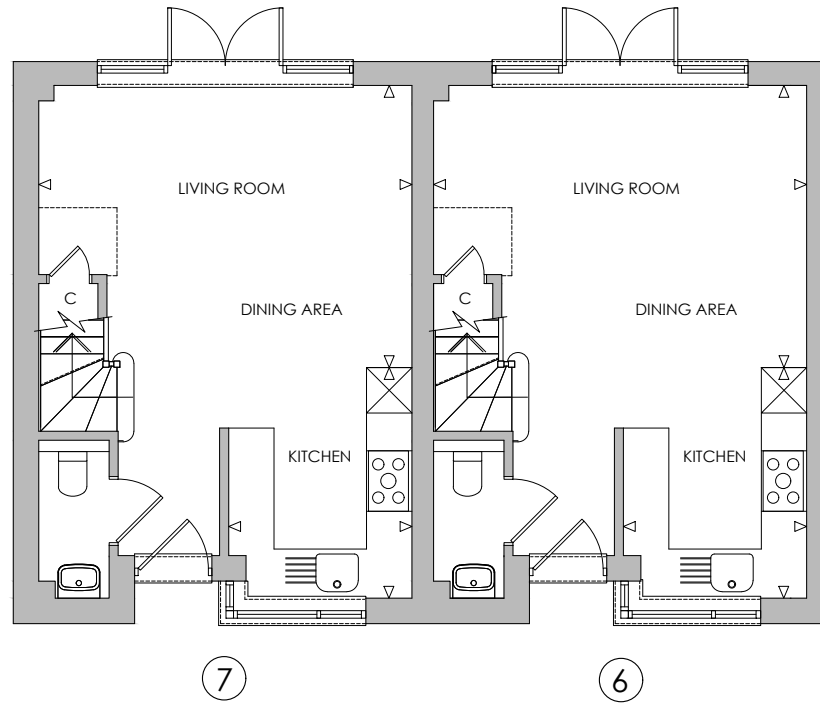


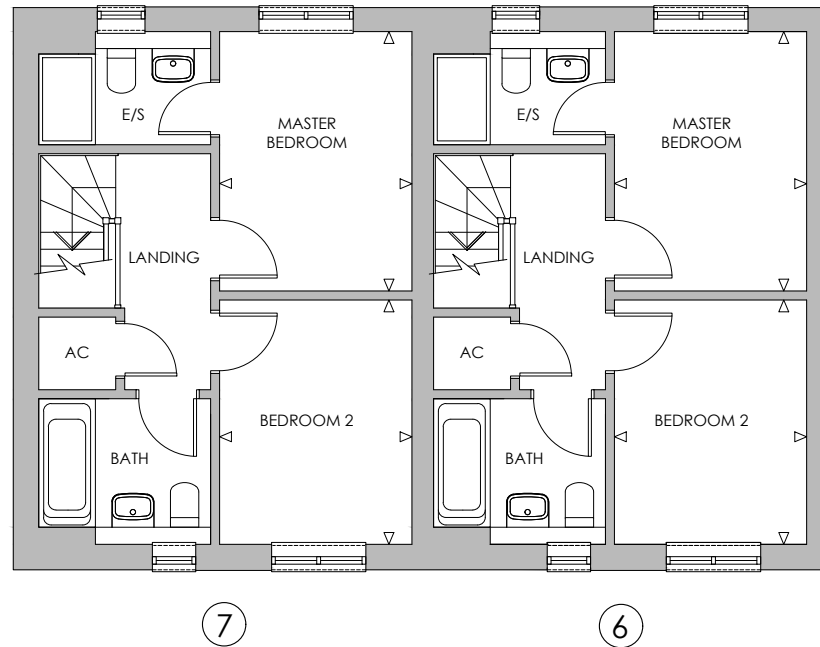
GROUND FLOOR PLAN - PLOTS 6-7



PLOTS 6 & 7

LIVING / DINING ROOM	4935mm (max) x 3730mm (max)	16'2" (max) x 12'3" (max)
KITCHEN	2425mm (max) x 3050mm	7'11" (max) x 10'

FIRST FLOOR PLAN - PLOTS 6-7



PLOTS 6 & 7

MASTER BEDROOM
BEDROOM 2

2540mm x 3430mm
2540mm x 3230mm

8'4" x 11'3"
8'4" x 10'7"