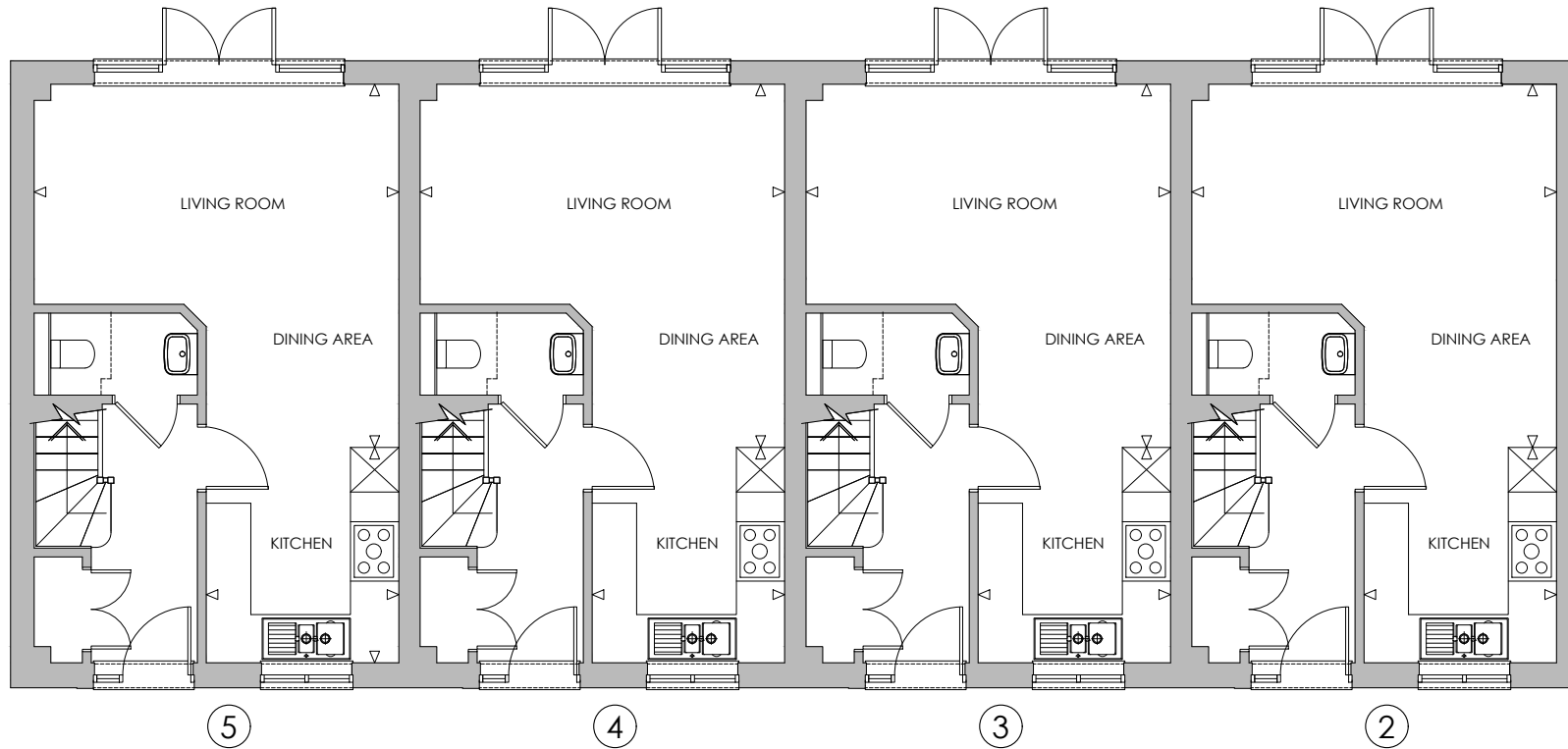


## GROUND FLOOR PLAN - PLOTS 2-5



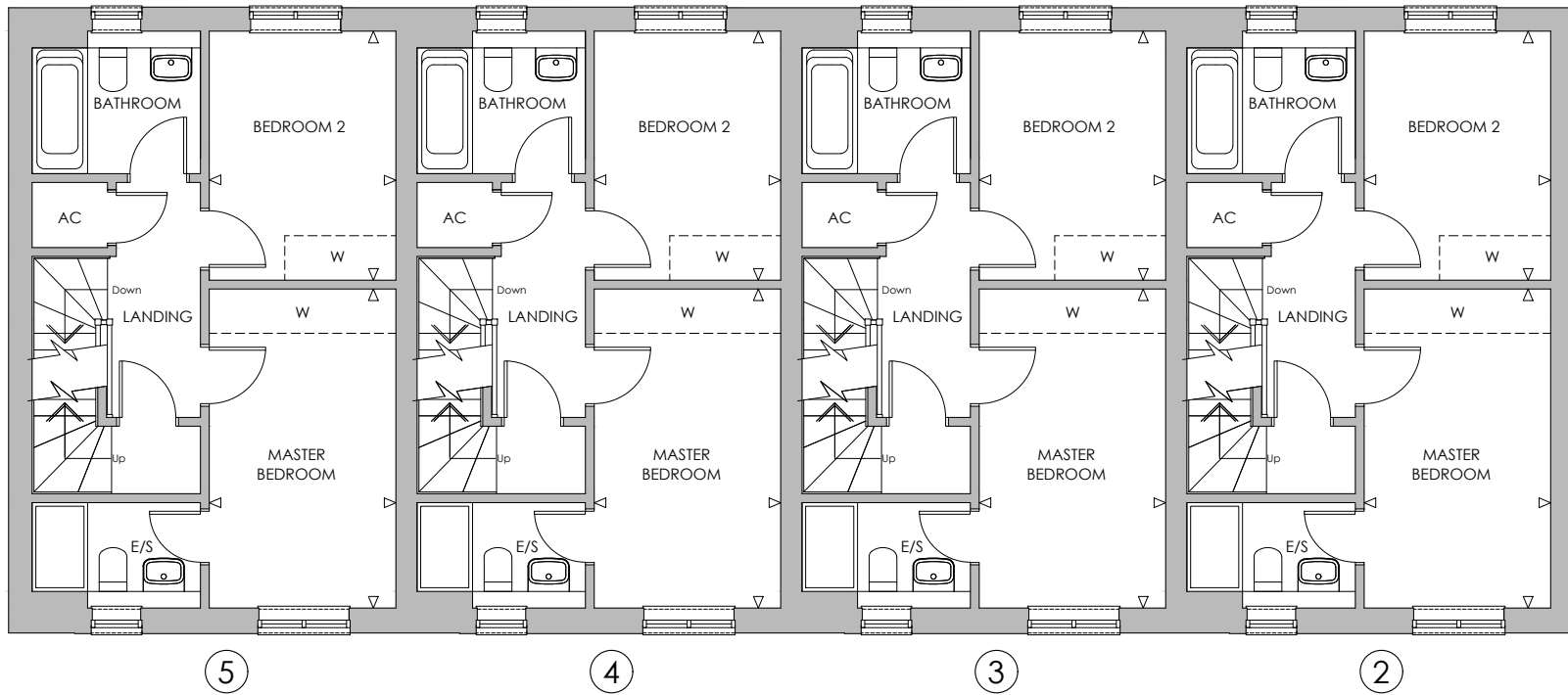
### PLOTS 2 - 5

LIVING / DINING ROOM  
KITCHEN

4910mm (max) x 4895mm (max)  
2595mm x 2900mm

16'2" (max) x 16'1" (max)  
8'6" x 9'6"

## FIRST FLOOR PLAN - PLOTS 2-5



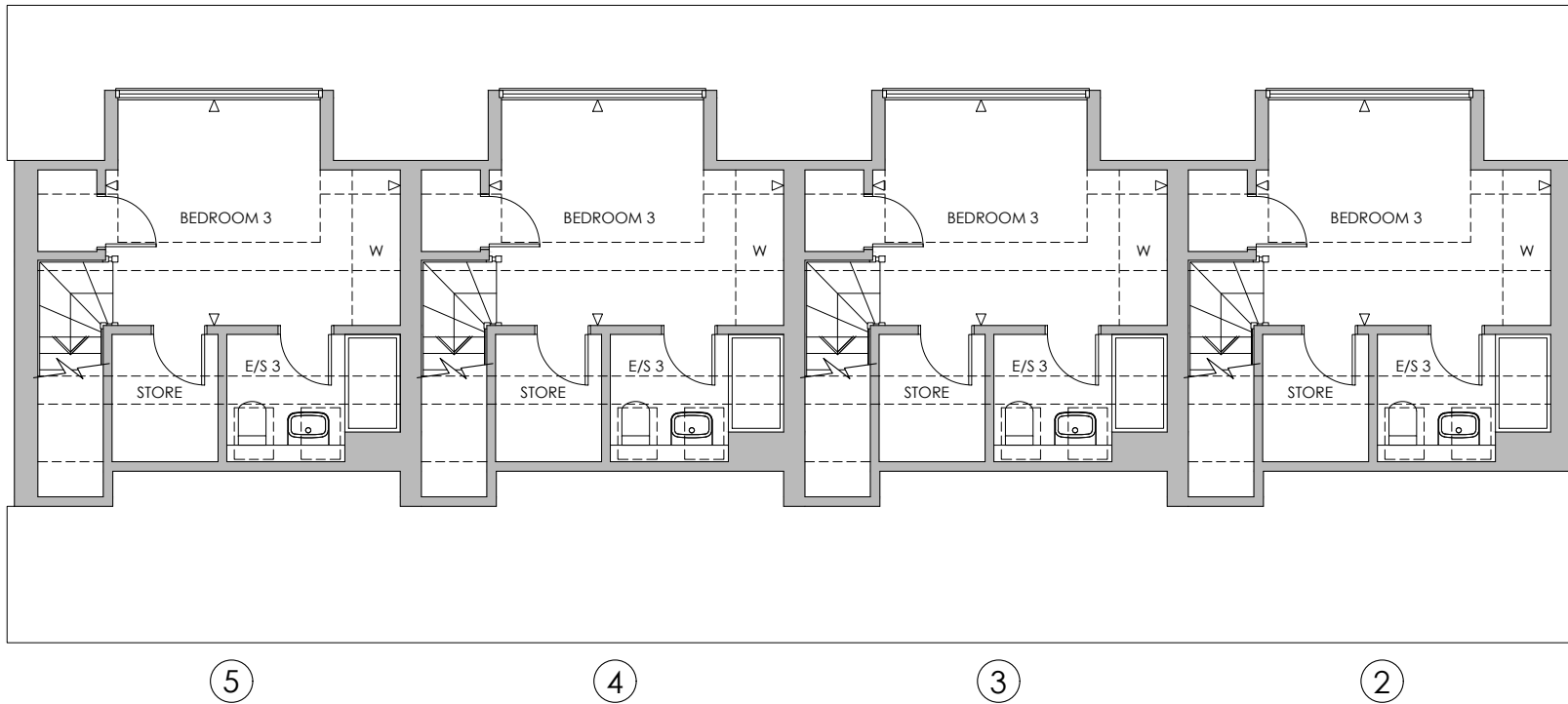
### PLOTS 2 - 5

MASTER BEDROOM  
BEDROOM 2

2520mm x 4310mm  
2520mm x 3365mm

8'3" x 14'2"  
8'3" x 11'1"

## SECOND FLOOR PLAN - PLOTS 2-5



### PLOTS 2 - 5

BEDROOM 3

3995mm (max) x 3060mm (max)

13'1" (max) x 10'1" (max)