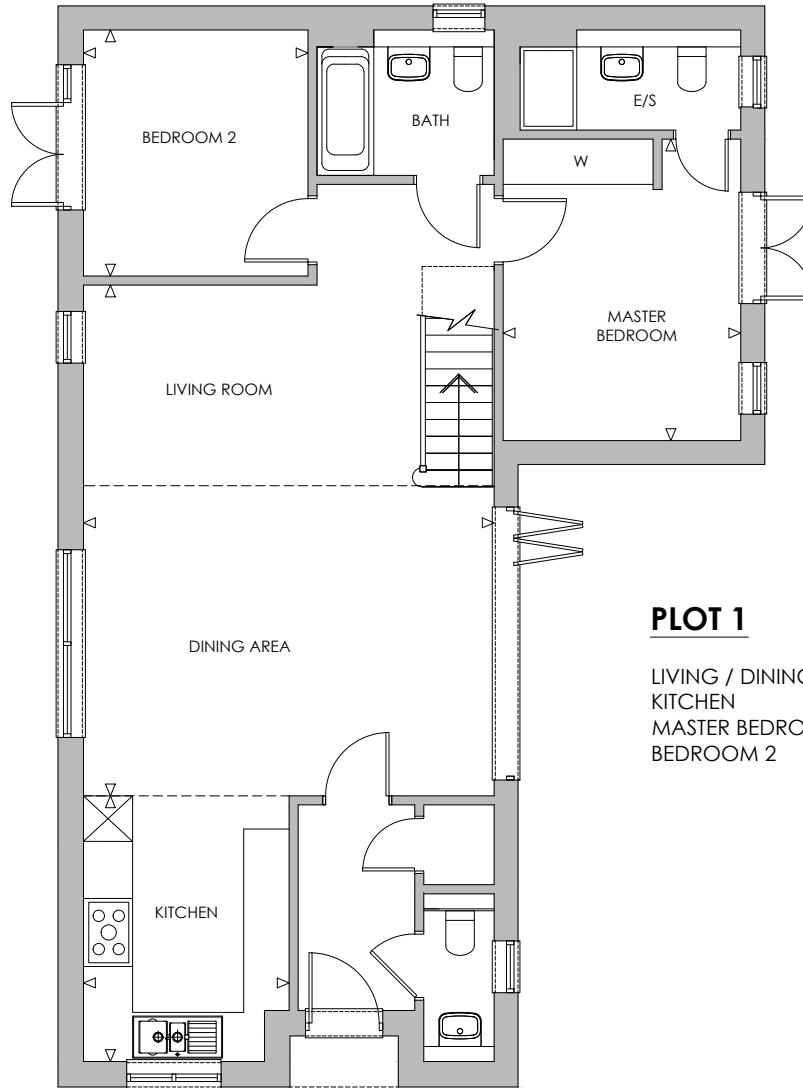


GROUND FLOOR PLAN - PLOT 1

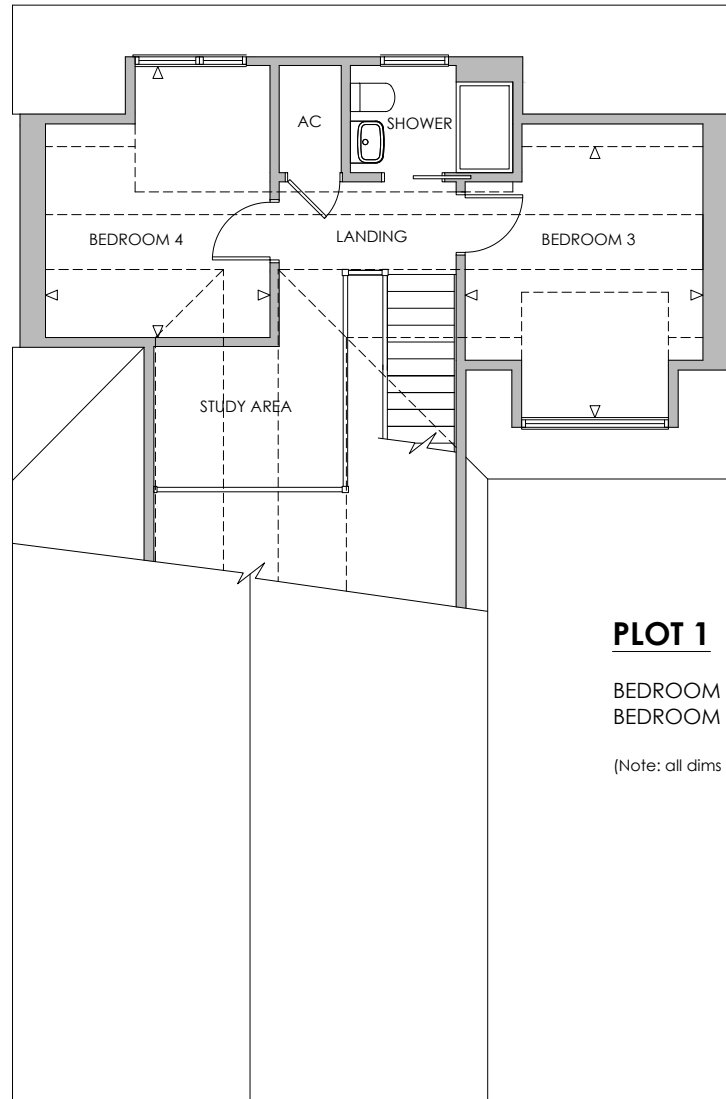


PLOT 1

LIVING / DINING ROOM
 KITCHEN
 MASTER BEDROOM
 BEDROOM 2

5430mm (max) x 6755mm (max)	17'10" (max) x 22'2" (max)
2720mm x 3515mm	8'11" x 11'6"
3145mm x 3985mm (max)	10'4" x 13'1" (max)
2970mm x 3255mm	9'9" x 10'8"

FIRST FLOOR PLAN - PLOT 1



PLOT 1

BEDROOM 3	3145mm (max) x 3585mm (max)	10'4" (max) x 11'9" (max)
BEDROOM 4	2970mm (max) x 3585mm (max)	9'9" (max) x 11'9" (max)

(Note: all dims taken to the 1500mm height line)