



1 Lancaster Cottages Odiham, Hampshire

STRUTT & PARKER

1 Lancaster Cottages

Odiham, Hampshire
RG29 1LH

A brand new end of terrace
cottage situated adjacent to
Odiham's historic High Street

Hook 3.5 miles, Basingstoke 9 miles,
Farnham 8 miles

Sitting room | Open plan dining room
Kitchen | Main bedroom with en suite shower
Two further bedrooms | Three bathrooms

Landscaped rear gardens | Allocated parking

EPC rating band B

The property

1 Lancaster Cottages is a brand new end of terrace cottage built as a joint venture between established local developers, Compton Homes and Forays Ltd.

The accommodation is arranged over three floors and has been finished to a high standard with features including under floor heating (ground floor only), whole house ventilation (using sustainable heat recovery system), oak internal doors with chrome fittings, wired for the latest high specification CAT 5 and Sky + TV, quality ceramic tiling, pre-finished timber double glazed windows and doors, complete with floor coverings throughout.

Location

Odiham has a wide selection of shops and local services including sought after schools, doctor's surgery and restaurants and public houses. There are a number of footpaths into the adjoining countryside and along the Basingstoke Canal.

Directions

From our Odiham office proceed down the High Street (East) and just before the turning to Archery Fields the entrance to Lancaster Cottages will be found on the right hand side.

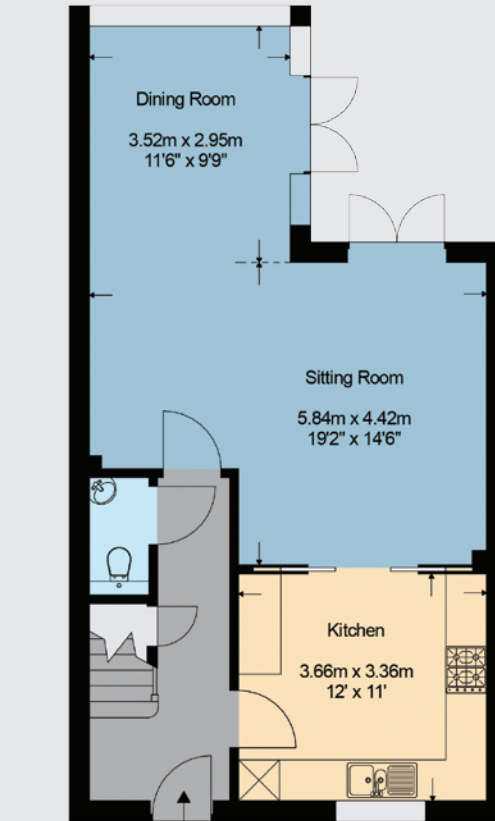
General

Local Authorities: Hart District Council
(01252 622122).

Services: Connected to all mains services.



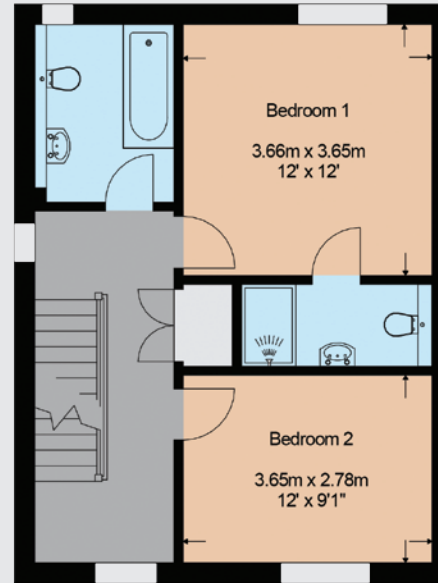




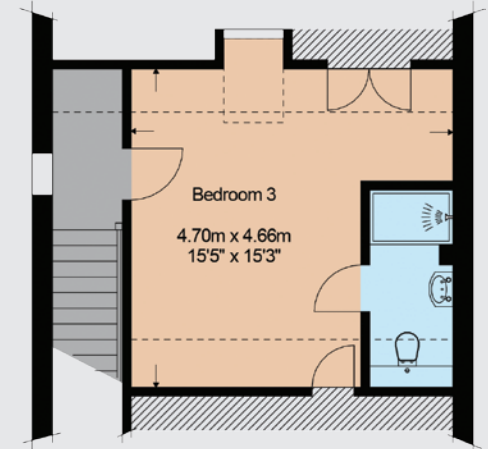
Ground Floor

1 Lancaster Cottages, Odiham.

Approximate gross internal area
130.02 sq.m. 1400 sq.ft.



First Floor



Second Floor

This diagram has been produced by Berkshire Draughting Ltd. for Strutt & Parker. Internal measurements only are taken and measurements in each room are accurate to within 75mm. Fixtures & Fittings are representative and only approximate in terms of shape and style. Compass point shows magnetic north. Do not scale. © 2014 Berkshire Draughting Ltd. Reproduced by Strutt & Parker under licence. All rights reserved.

IMPORTANT NOTICE

Strutt & Parker LLP gives notice that: 1. These particulars do not constitute an offer or contract or part thereof. 2. All descriptions, photographs and plans are for guidance only and should not be relied upon as statements or representations of fact. All measurements are approximate and not necessarily to scale. Any prospective purchaser must satisfy themselves of the correctness of the information within the particulars by inspection or otherwise. 3. Strutt & Parker LLP does not have any authority to give any representations or warranties whatsoever in relation to this property (including but not limited to planning/building regulations), nor can it enter into any contract on behalf of the Vendor. 4. Strutt & Parker LLP does not accept responsibility for any expenses incurred by prospective purchasers in inspecting properties which have been sold, let or withdrawn. 5. If there is anything of particular importance to you, please contact this office and Strutt & Parker will try to have the information checked for you. Photographs taken July 2014. Particulars prepared July 2014.

Printed by Ravensworth B2785072/07/2014

Odiham
82 High St, Odiham, Hampshire RG29 1LP
01256 702892

odiham@struttandparker.com
struttandparker.com

50 offices across England and Scotland,
including 10 offices in Central London